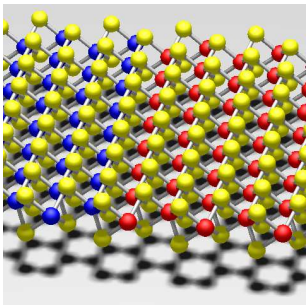


Computational Quantum Information Electronics Area

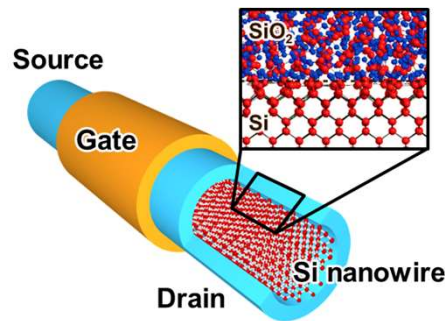
Our laboratory conducts **theoretical and numerical research** on **novel materials and devices**, and their applications in **integrated and quantum electronic systems**.

The research topics cover a wide area from quantum phenomena in semiconductors to the circuit and system design.

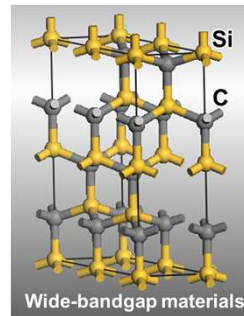
2D Materials



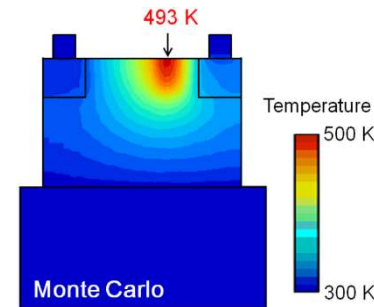
Nano-scale Transistors



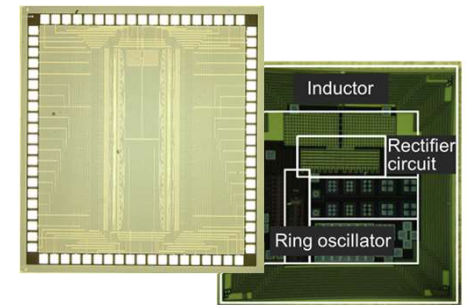
Power Devices



Phonon Transport



Integrated Circuit Design



Atomistic Model

Quantum Transport

Device Physics

Integrated Circuit

Teaching staff: Professor

Nobuya MORI

nobuya.mori@eei.eng.osaka-u.ac.jp

Associate Professor

Toshimasa MATSUOKA

matsuoka@eei.eng.osaka-u.ac.jp

URL: <http://www.si.eei.eng.osaka-u.ac.jp/index-e.html>