

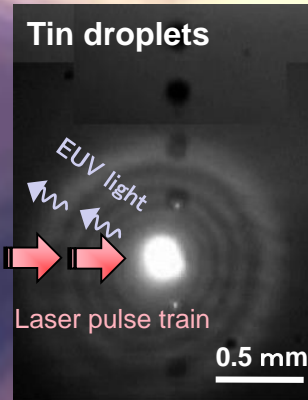
Research

This laboratory is collaborating with the division of electrical, electronic and information engineering in the graduate school of engineering. We are exploring a plasma created with leading-edge high power lasers such as Gekko XII and LFEX lasers of ILE for innovation and technologies : (1) new light source for the next-generation semiconductor device production, (2) intense light and particle beams generation and (3) Fusion energy with laser.

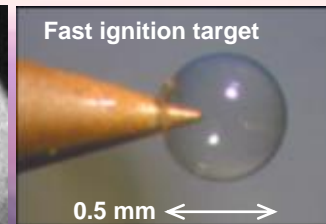
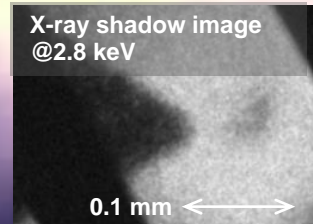
Members

Prof. Hiroaki Nishimura [nishimu@](mailto:nishimu@ile.osaka-u.ac.jp) Associate Prof. Akifumi Yogo [yogo-a@](mailto:yogo-a@ile.osaka-u.ac.jp)
 PDF 3, Tech. Assist 1, Students 6, (@ile.osaka-u.ac.jp)
 Home Page <http://www.ile.osaka-u.ac.jp/research/pxs/>

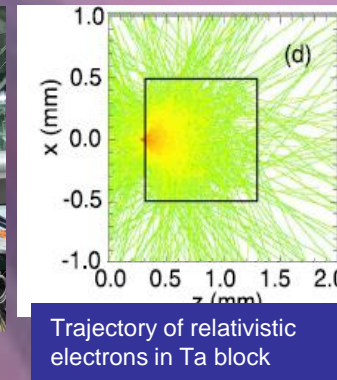
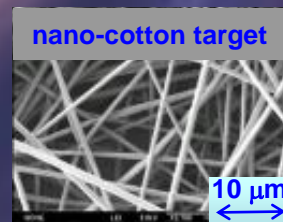
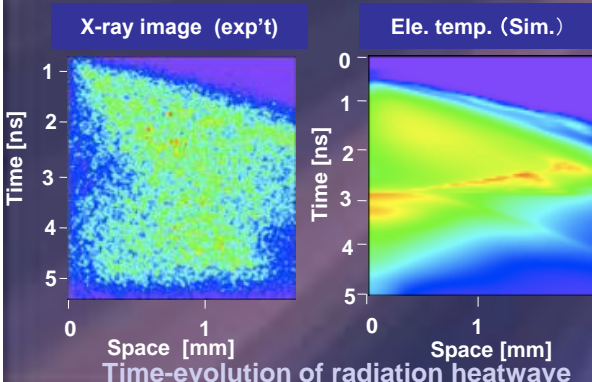
New light source



Fusion Plasma Diagnostics



Laser Fusion



Intense light and particle beam generation