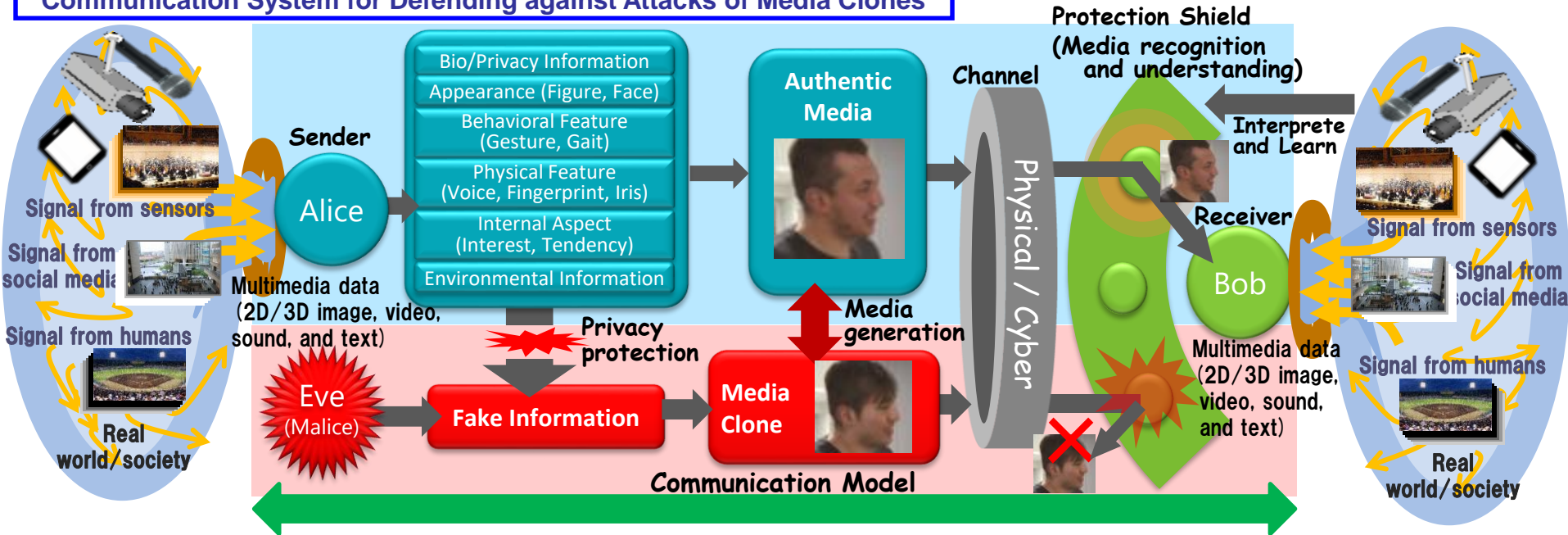


# Media Integrated Communication Area (Babaguchi Laboratory)

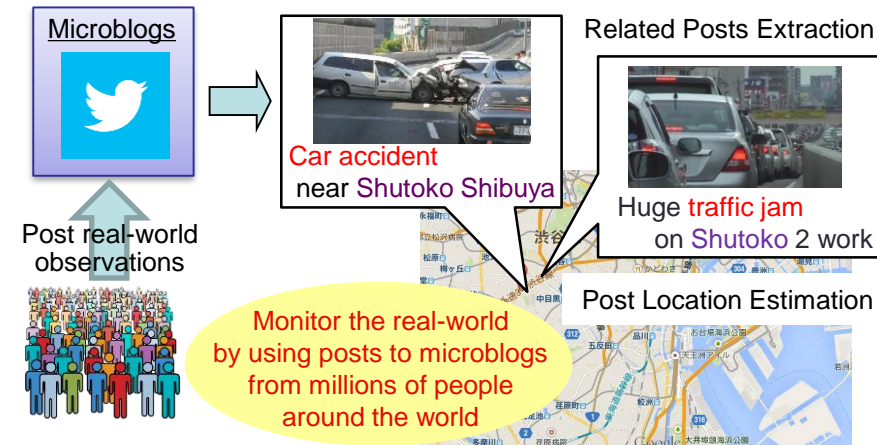
Department of Information and Communications Technology,  
Division of Electrical, Electronic and Information Engineering, Graduate School of Engineering

The keyword for our laboratory is Multimedia. We are mainly working on the development of a communication system for defending against attacks of media clones, whose fundamental technologies are recognition, understanding, and generation of multimedia content and privacy protection.

## Communication System for Defending against Attacks of Media Clones

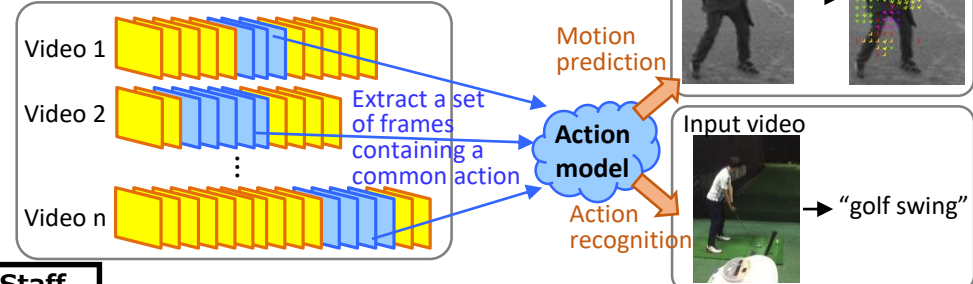


## Real-world Sensing via Microblogs



## Action Recognition and Understanding

Action videos on the web (annotated by text-tags)



### Staff

Noboru Babaguchi, Professor (E-mail: [babaguchi@comm.eng.osaka-u.ac.jp](mailto:babaguchi@comm.eng.osaka-u.ac.jp))  
 Naoko Nitta, Associate Professor (E-mail: [naoko@comm.eng.osaka-u.ac.jp](mailto:naoko@comm.eng.osaka-u.ac.jp))  
 Kazuaki Nakamura, Assistant Professor (E-mail: [k-nakamura@comm.eng.osaka-u.ac.jp](mailto:k-nakamura@comm.eng.osaka-u.ac.jp))  
 Seiko Myojin, Specially Appointed Researcher (E-mail: [myojin@nanase.comm.eng.osaka-u.ac.jp](mailto:myojin@nanase.comm.eng.osaka-u.ac.jp))