

Department of Quantum Electronic Device Engineering
Area of Electronics Device Engineering

Kondow Laboratory <http://www.e3.eei.eng.osaka-u.ac.jp>

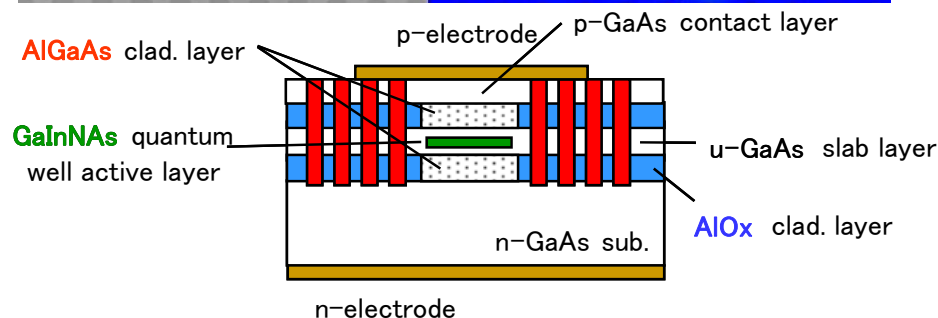
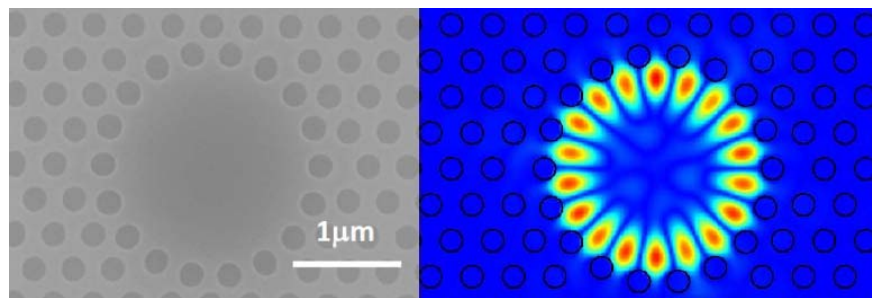
Theme

Development of innovative semiconductor devices for next generation in IT

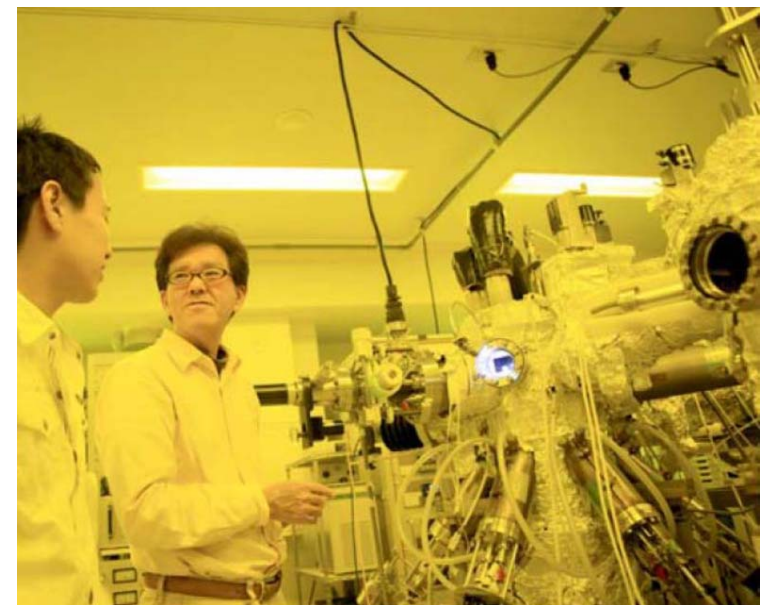
Main research

Circular defect (CirD) photonic crystal lasers

~The 3rd basic laser structure~



Structure of a developing laser
Top and cross-sectional view



Molecular Beam Epitaxy (MBE) machine
Nobel semiconductor, GaInNAs, can be grown.

Staff

Prof.: Masahiko KONDOW, Associate Prof.: Hirotake KAJII, Assistant Prof.: Masato MORIFUJI