

# Nanomaterials and Nanocharacterization Area ( M. Katayama Laboratory )

## Division of Electrical, Electronic and Information Engineering

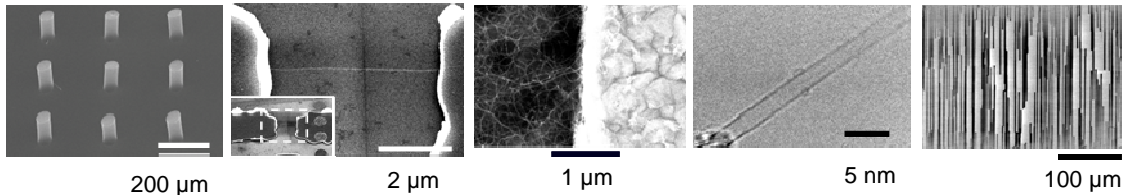
### Graduate School of Engineering

#### Research Themes

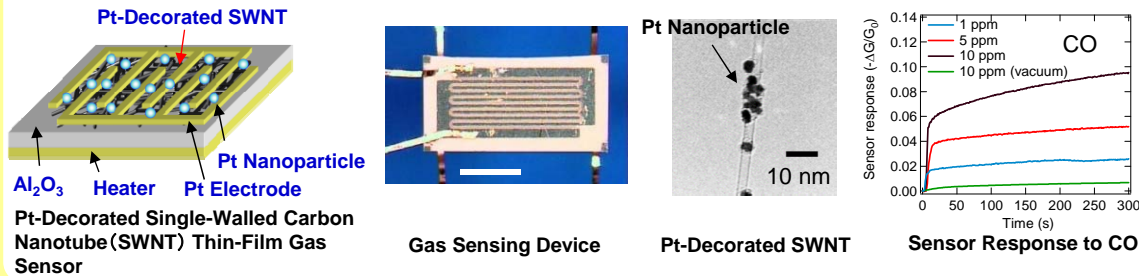
- (1) Development of New Functional Devices Based on Low-dimensional Nanomaterials
- (2) Development of Ultimate Diagnosis of Nanomaterial and Its Application

#### Research Topics

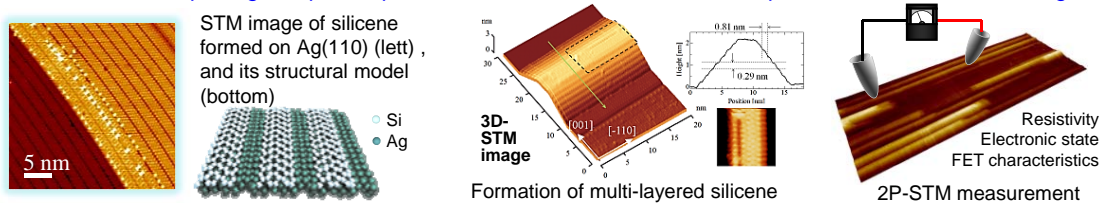
##### (1) Synthesis of Carbon Nanotubes with Well-Controlled Morphology and Structure



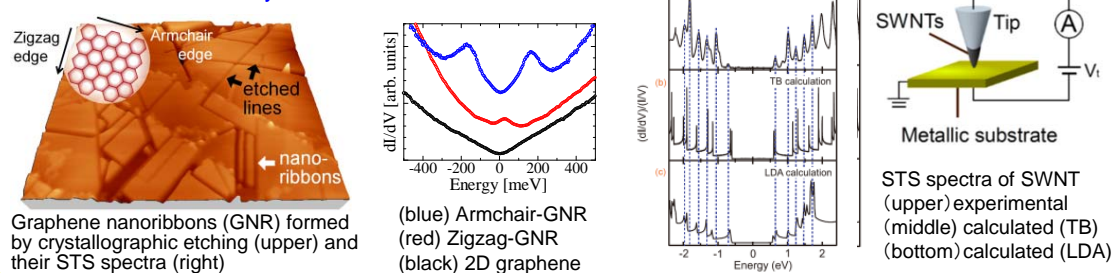
##### (2) Single-Walled Carbon Nanotube Thin-Film Sensor for Ultrasensitive Detection of Gas Pollutants



##### (3) Growth and Exploring Unique Properties of Silicene: Silicon Sheet Composed of Six-membered Rings



##### (4) Electronic State Analysis of Nano Carbon Materials



#### Staff

Mitsuhiro Katayama (Professor)

TEL: 06-6879-7775

E-mail: katayama@nmc.eei.eng.osaka-u.ac.jp

Osamu Kubo (Associate Professor)

TEL: 06-6879-7777

E-mail: okubo@nmc.eei.eng.osaka-u.ac.jp

Hiroshi Tabata (Assistant Professor)

TEL: 06-6879-7778

E-mail: tabata@nmc.eei.eng.osaka-u.ac.jp

#### URL

[http://nmc.eei.eng.osaka-u.ac.jp/index\\_j.html](http://nmc.eei.eng.osaka-u.ac.jp/index_j.html)