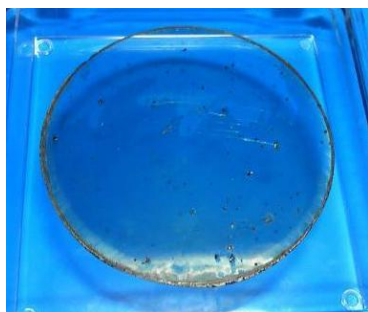


Functional Materials Creation Area (Mori Laboratory)

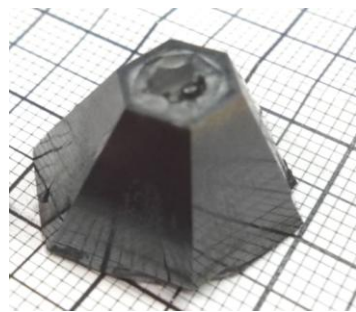
<http://crystal.pwr.eng.osaka-u.ac.jp/indexe.html>

Professor: Yusuke Mori, Associate Professor: Masashi Yoshimura, Assistant Professor: Mamoru Imade, Professor Emeritus: Takatomo Sasaki
Specially Appointed Professors :Gen Sazaki, Specially Appointed Associate Professor: Hiroaki Adachi,
Specially Appointed Professor (supplementary assignment): Kazuhisa Yamamoto, Specially Appointed Assistant Professor (supplementary assignment): Mihoko Maruyama, Visiting Academic Staffs: Hiroshi Yoshikawa, Takahiro Kawamura

● Solution Growth of GaN Crystals

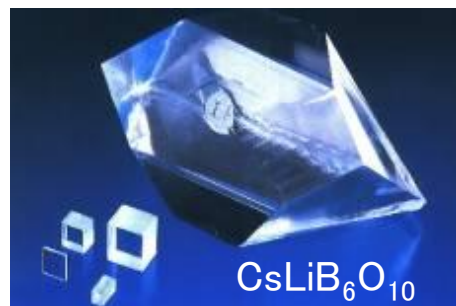


Φ4-inch GaN wafer



2-cm bulk GaN single crystal

● NLO Crystal for Deep-UV Light Generation



CsLiB₆O₁₀

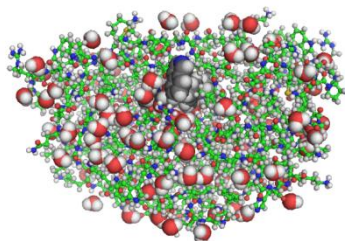


Mask inspection system based on DUV laser with CLBO

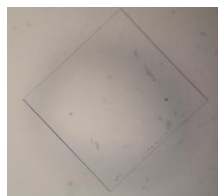
● Growth of Protein Crystals

→ Start venture company **SOSHO, Inc. (2005)**

Improvement of crystal quality by the stirring method and the fs-laser technique

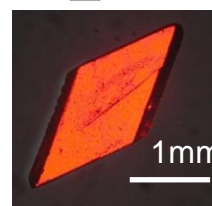
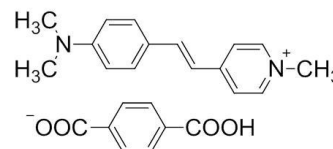


HIV-1 protease



A crystal over 2mm²

● Organic NLO Crystal for THz Application



DAS-HTP

